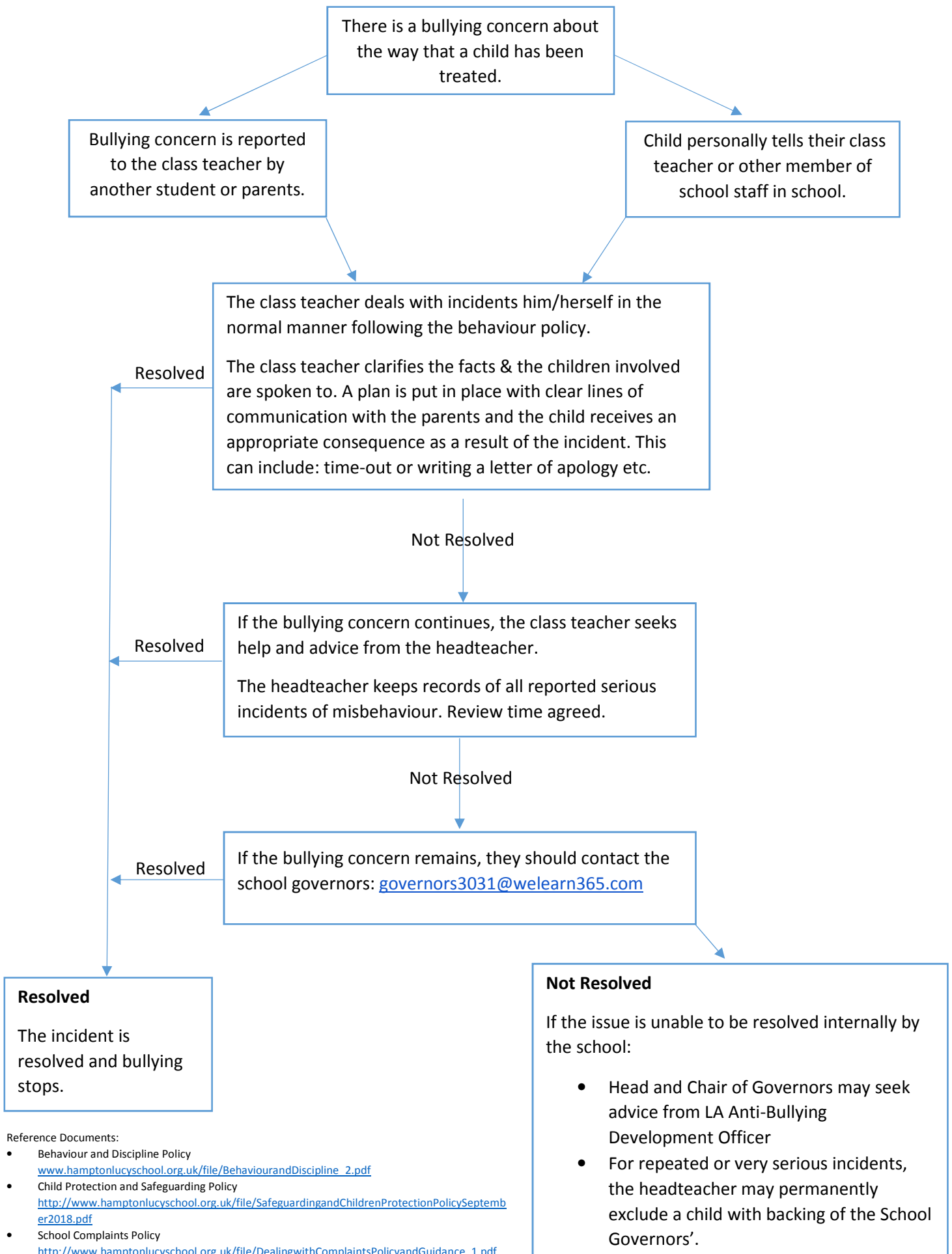


Anti-Bullying Action Flow Chart

The school does not tolerate bullying of any kind. If we discover that an act of bullying or intimidation has taken place, we act immediately to stop any further occurrences of such behaviour.



Reference Documents:

- Behaviour and Discipline Policy
www.hamptonlucyschool.org.uk/file/BehaviourandDiscipline_2.pdf
- Child Protection and Safeguarding Policy
<http://www.hamptonlucyschool.org.uk/file/SafeguardingandChildrenProtectionPolicySeptember2018.pdf>
- School Complaints Policy
http://www.hamptonlucyschool.org.uk/file/DealingwithComplaintsPolicyandGuidance_1.pdf